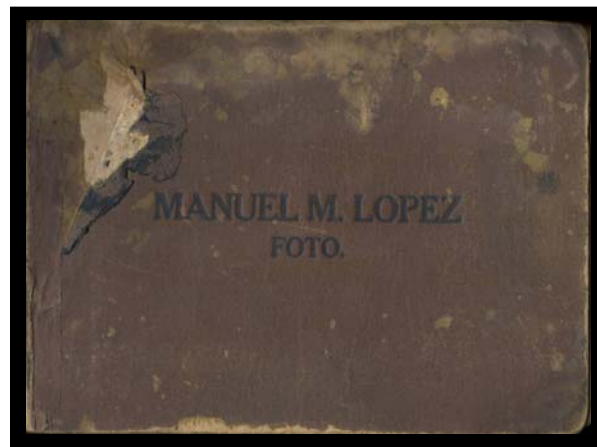
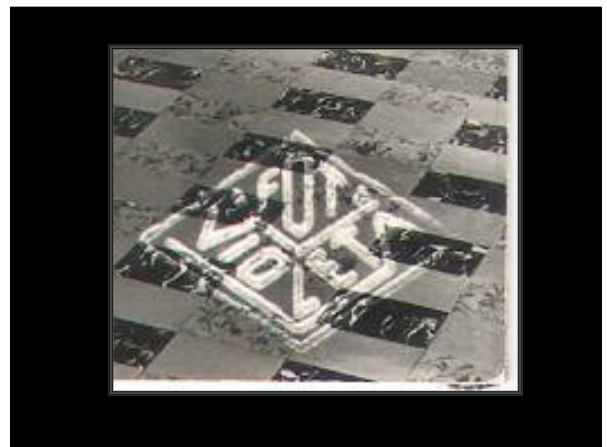


MANUEL M. LOPEZ  
1890 1981

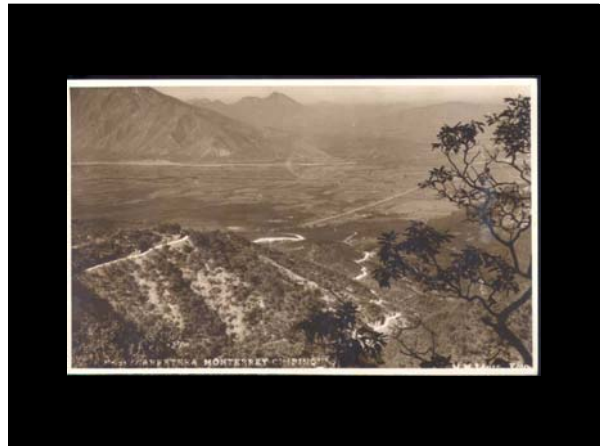
CRONISTA GRAFICO DE  
MONTERREY A TRAVES DE SUS  
TARJETAS POSTALES  
COLECCIÓN HECTOR JAVIER BARBOSA







EL ENTORNO





# EL CENTRO HISTORICO





32 PALACIO MUNICIPAL  
MONTSERRAT, MEX. M. M. LOPEZ, FOT.



# EDIFICIOS PUBLICOS



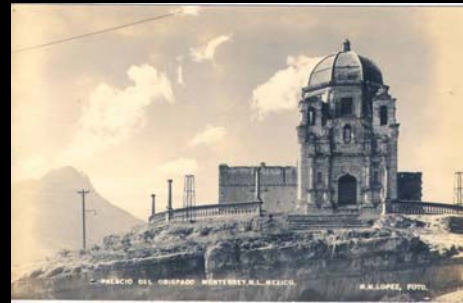
54 PALACIO DE GOBIERNO  
MONTSERRAT, MEX. M. M. LOPEZ, FOT.

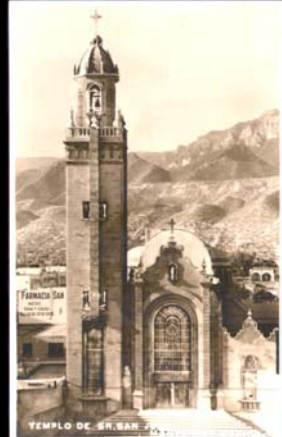


M. M. LOPEZ, FOT. IGLA ANAHUAC  
Foto. Gracia Montserrat, M. L. M. M. LOPEZ, FOT.



# EDIFICIOS RELIGIOSOS





# CALLES Y AVENIDAS







# MONUMENTOS Y PLAZAS



# ESCUELAS



# HOSPITALES



# INDUSTRIAS Y BANCOS

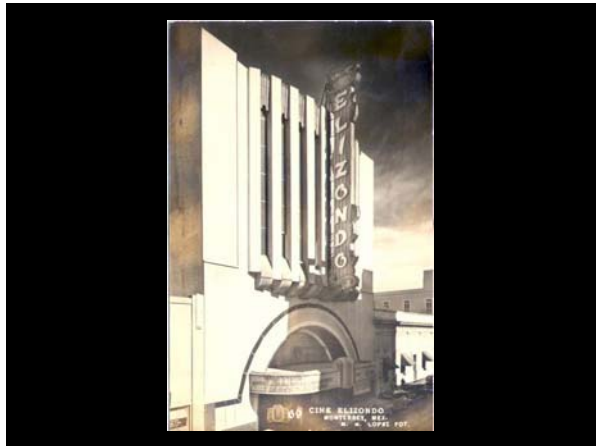


# COMUNICACIONES



# TEATROS Y ESPARCIMIENTOS





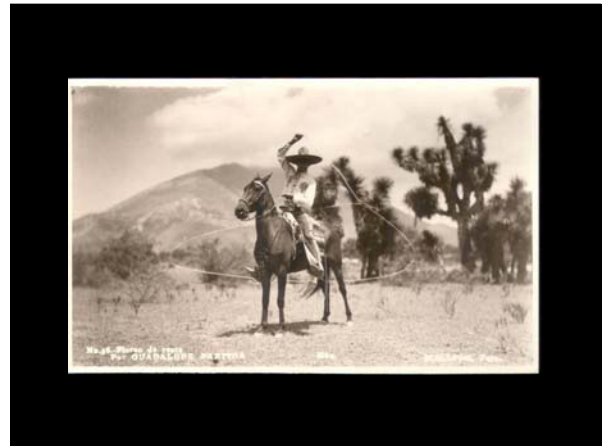


# HOTELES





# FOLKLORE





TARJETAS  
POSTALES  
FORANEAS







330 VISTA DE NUEVO LAREDO, MEXICO. M.M. Lloyd, Photo.



330 AVE. GUERRERO, NUEVO LAREDO, TAMPA, MEXICO.



330 TERCERA DE ESTADUNIDENSES, NUEVO LAREDO, TAMPA, MEXICO.



336 CASA DE COINCIDENCIAS, NUEVO LAREDO, TAMPA, MEXICO.



350 TEMPLO, NUEVO LAREDO, TAMPA, MEXICO.



350 CALLE N. DE LA REVOLUCION, NUEVO LAREDO, TAMPA, MEXICO.



199 LA CAPILLA  
TOLUCA, MEXICO



212 LA MANO DEL MUERTO  
ESTADO DE SAN PABLO



200



304 TAMAZUNCHALE, S.L.P.  
CARRETERA NACIONAL MEXICOLATINA



307 CUESTA DE TAMAZUNCHALE, S.L.P.  
CARRETERA NACIONAL MEXICOLATINA



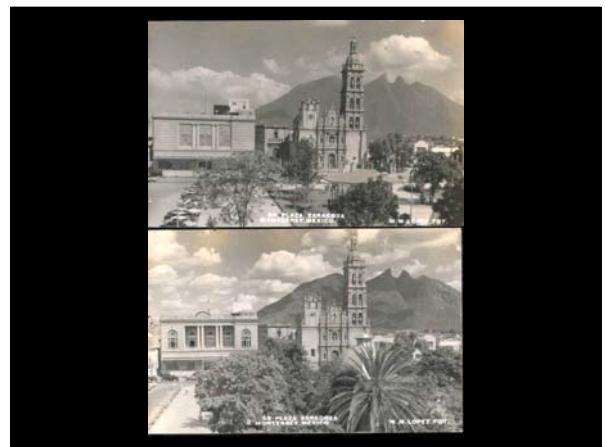
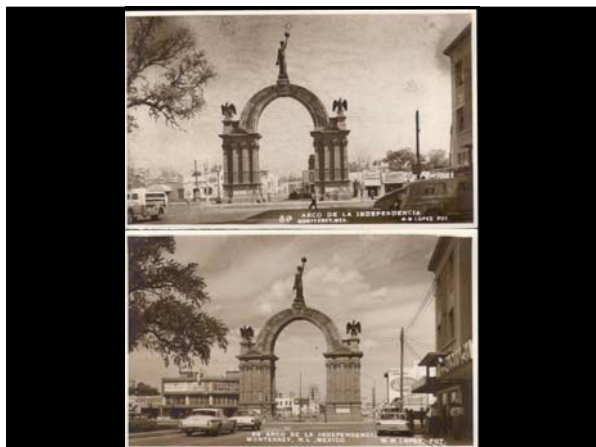
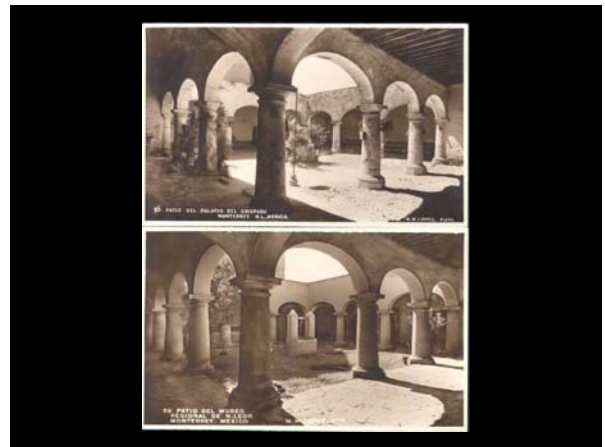
105 ROCHERIZCO, MEXICO

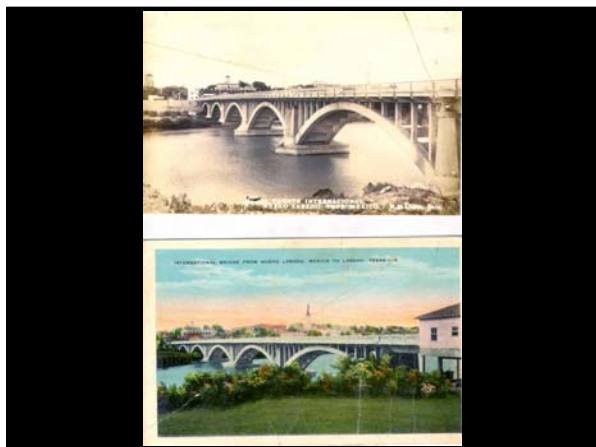
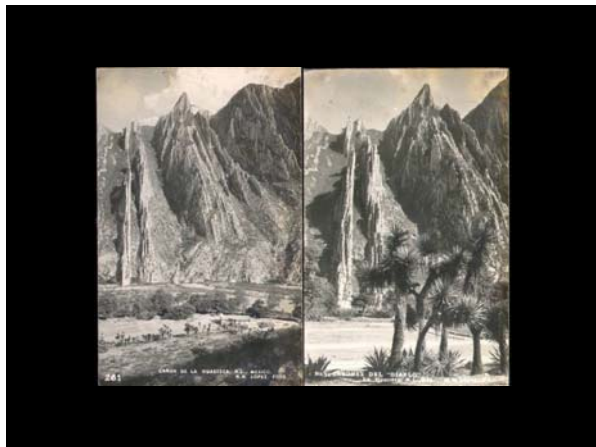
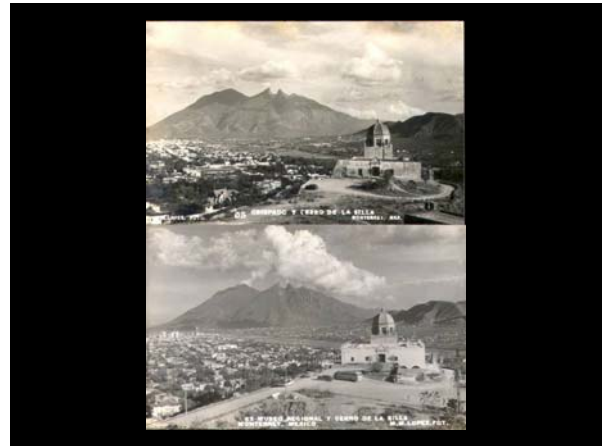
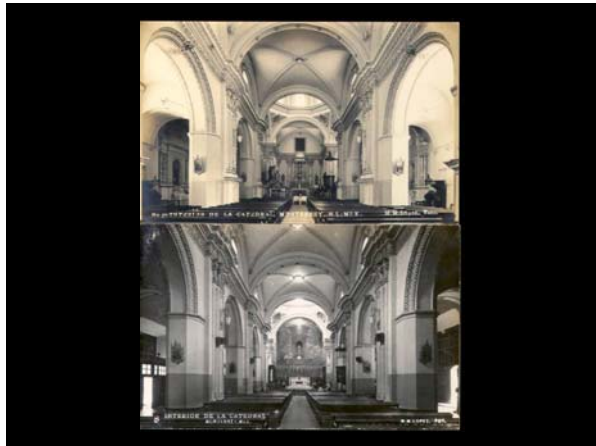


# CURIOSIDADES

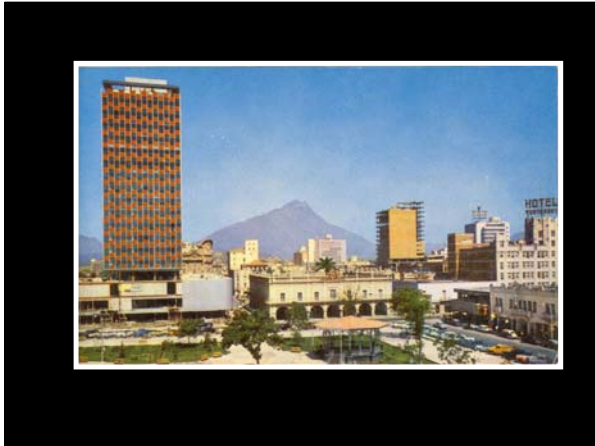
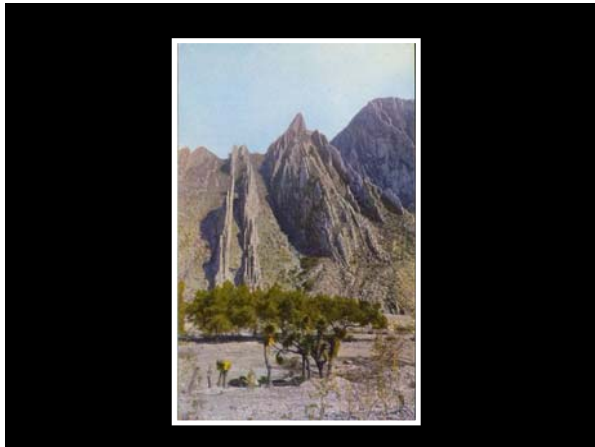
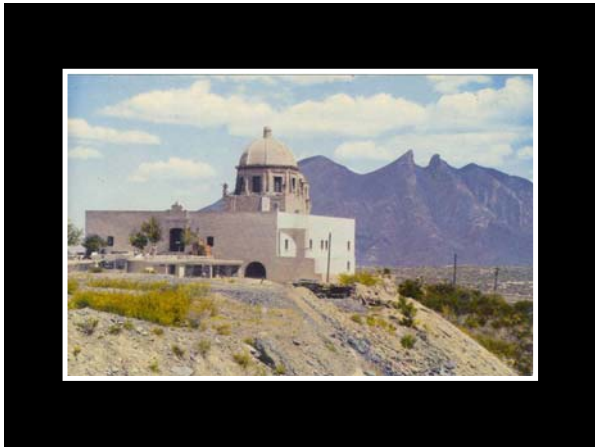
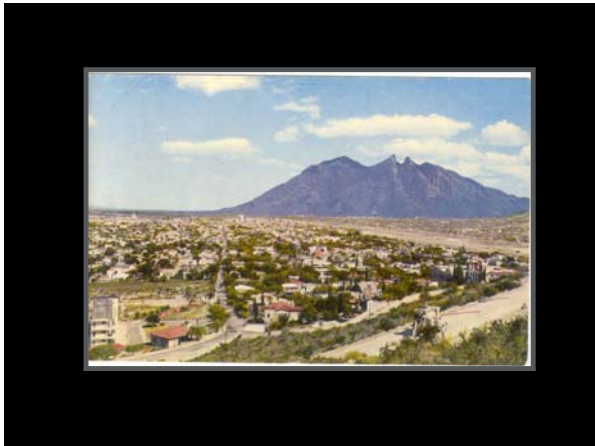


# SU TECNICA EN LAS TARJETAS





EL COLOR  
Y LA DECADENCIA



PRIMER CONGRESO  
MEXICANO DE TARJETAS  
POSTALES  
MONTERREY, N.L.  
AGOSTO 15 Y 16 DE 2008